

Hitch Climber Eccentric



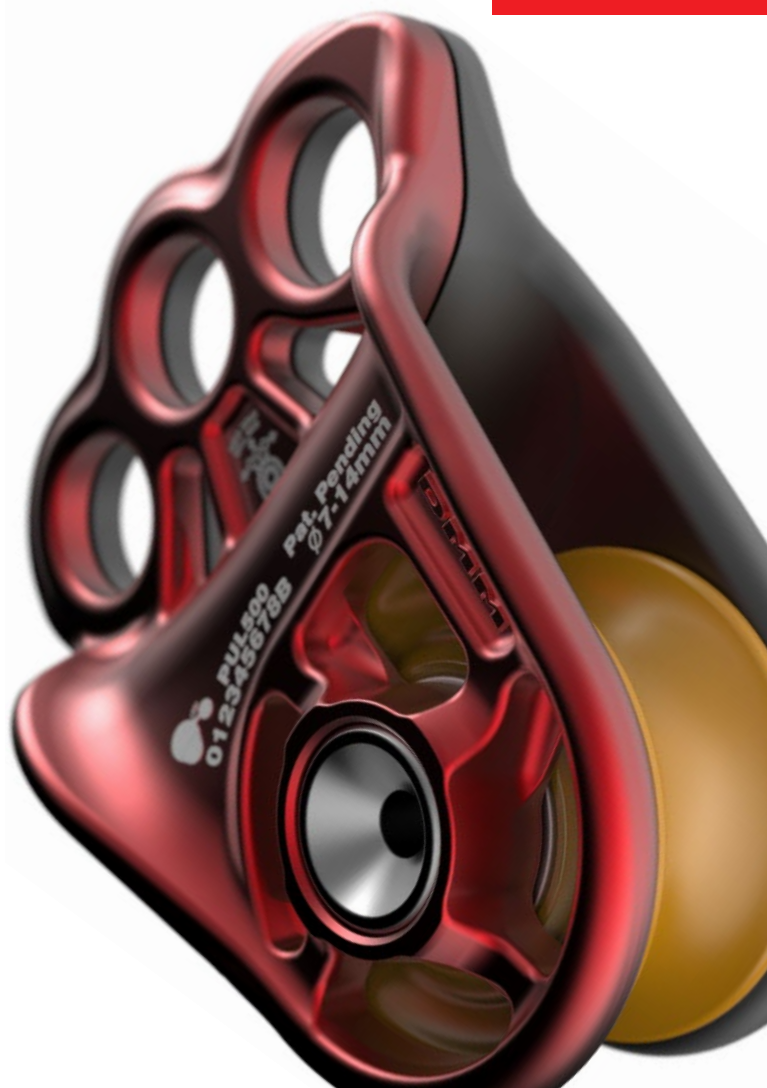
High performance geometry.

The eccentric geometry and fully-featured design of the Hitch Climber Eccentric is an evolution for the classic Hitch Climber system.

It will advance your friction hitch earlier and fairlead your rope better for greater efficiency. The optimised fairlead flairs direct rope towards the sheave and improve slack handling.

Precision engineered to be very strong, light and rope friendly it has a striking design aesthetic.

For friction hitch work positioning systems, whether with moving or stationary rope, it is the epitome of refinement.



HITCH CLIMBER ECCENTRIC V01



FEATURES

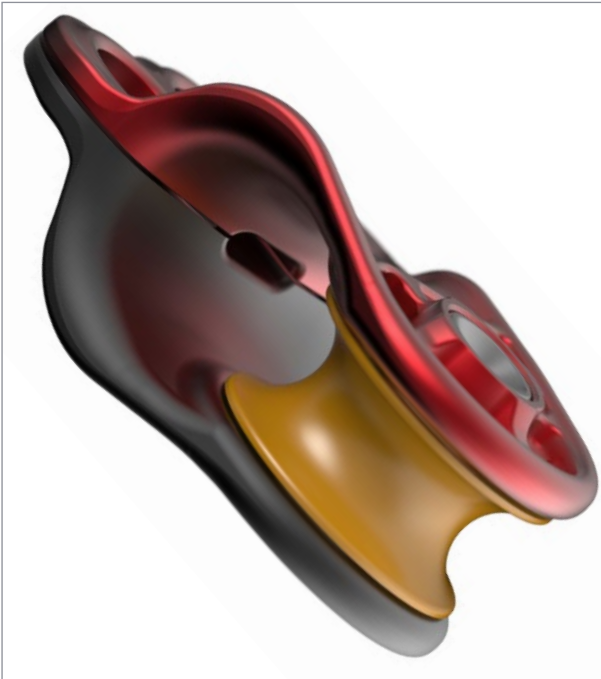
- New pushing plates advance friction hitches earlier and more efficiently
- Optimised fairlead flairs
- Three hole rig plate facilitates wide range of positioning systems and neatly organises connectors
- Hot forged and CNC machined aluminium side plates
- Large diameter high stiffness stainless steel axle assembly
- Large sheave with efficient roller bearing
- Corrosion resistant and tamper proof assembly
- Weight optimised design
- Available with DMM ID
- Patent pending

PRODUCT INFORMATION

TECH SPECS

Product Code	PUL500
Weight	144g
MBS	30kN
WLL	6kN
Sheave Diameter	42mm
Sheave Tread Diameter	28mm
Min Rope Diameter	7mm
Max Rope Diameter	14mm
Dimensions (W x H x D)	66 x 96 x 44mm

HITCH CLIMBER ECCENTRIC V01



PRODUCT INFORMATION

